



MW CTR-IN

6th ANNUAL MEETING



ALASKA



HAWAII



IDAHO



MONTANA



NEVADA



NEW MEXICO



WYOMING



Final Program

ADVANCING HEALTH DISPARITIES IN THE MOUNTAIN WEST REGION

UNLV STUDENT UNION, 2nd FLOOR

June 10 – 11, 2019

Las Vegas, NV



Our Mission

Build and Enhance Infrastructure Capacity to Increase Clinical & Translational Research in the Mountain West Region

To accelerate the development
of research capacity

To increase the quantity and
quality of successful NIH and
other grant applications in
clinical and translational research

To accelerate scientific discovery
to improve the health of the
residents of the 7 Mountain
West IDeA State Region

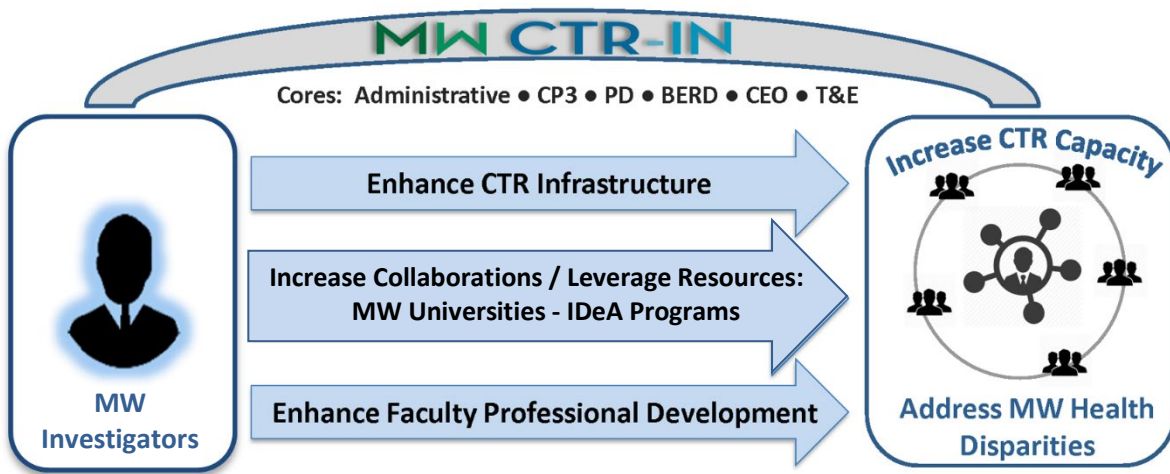
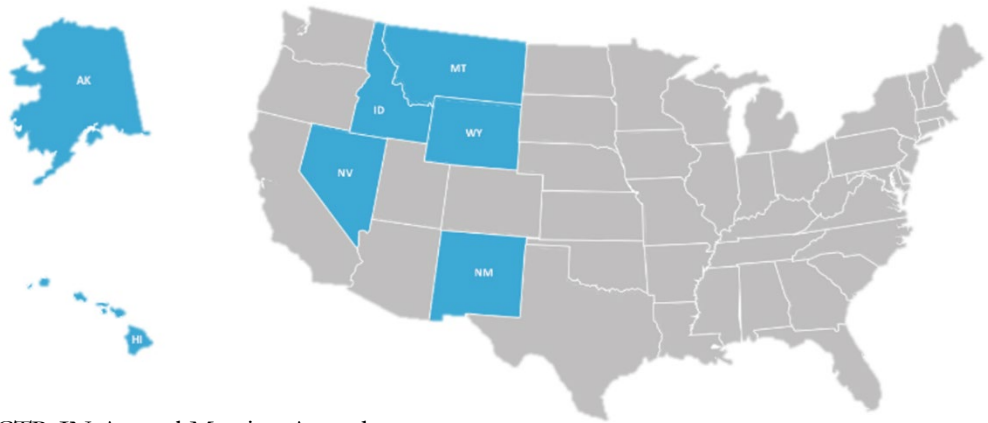




TABLE OF CONTENTS

Message from the Principal Investigator	4
MW CTR-IN Organizational Structure: Executive Members	5
General Information – Meeting Hotel, Meeting Location(s), & Shuttle Service Schedule	6 - 7
DAY ONE Agenda Schedule – Monday, June 10th	8 - 11
DAY TWO Agenda Schedule – Tuesday, June 11th	12 - 13
UNLV Wi-fi Instructions – Guest Access	14
Notes	15

WELCOME



Dear MW CTR-IN Annual Meeting Attendees,

I am thrilled to welcome you to our 6th Annual Mountain West (MW) Clinical & Translational Research Infrastructure Network (CTR-IN) Programmatic Meeting. I would like to extend a very warm welcome to all of the Mountain West research leadership, investigators, staff, collaborators, and colleagues as we celebrate our renewed Grant.

Our Annual Meeting this year addresses several programmatic priorities including the Opioid Crisis. As part of this focus on the Opioid Crisis, we will present some of our own MW CTR-IN Program funded research to combat the Opioid Crisis in the Mountain West Region. In addition, our Annual Meeting further builds upon the momentum generated in our previous meetings by facilitating a collaborative atmosphere to foster and enhance clinical and translational research.

Hence, in order to further foster and enhance clinical and translational research, a number of sessions such as the MW IDeA Program PI's Collaborative Workshop and Prior Years Pilot Grant Awardees (with extramural grant funding) meeting have been planned. Over the years, the MW CTR-IN Program has stimulated clinical research from many diverse disciplines including Engineering, which traditionally does not engage in clinical and translational human research. As such, we are featuring some of our past accomplished Engineering Pilot Grant Awardees who have excelled in clinical and translational research. We are also showcasing oral and poster research presentations involving clinical and translational research being conducted at our 13 Mountain West partner Universities. Moreover, we have also invited our past Pilot Grant Awardees with extramural grant funding to further learn from their successes and to optimize their continued involvement with the MW CTR-IN Program. We are also featuring some of our research leadership from the Mountain West Region relating to the impact of the MW CTR-IN Program on our partner Universities.

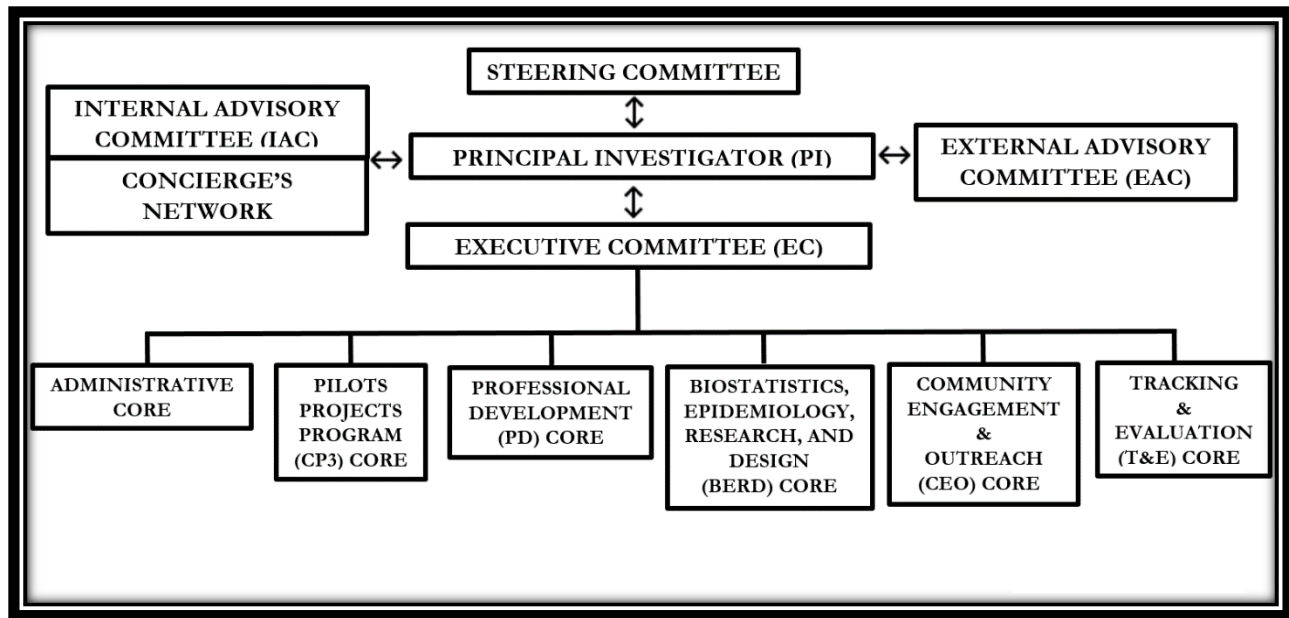
As last year, a Welcome and Networking Reception with a formal dinner to celebrate the past, present, and future of the MW CTR-IN Program at the Smith Center of the Performing Arts will be held on June 10th, Monday evening. This Reception will also include a poster viewing session featuring our current Pilot Grant Awardees as well as clinical and translational research being conducted throughout the MW Region.

I hope you will enjoy our 6th Annual MW CTR-IN Meeting as you further develop collaborations to enhance clinical & translational research in the Mountain West Region to improve the health of our residents.



Parvesh Kumar, MD
Principal Investigator, MW CTR-IN Program

MW CTR-IN PROGRAM ORGANIZATIONAL STRUCTURE



MW CTR-IN PROGRAM EXECUTIVE COMMITTEE MEMBERS



Parvesh Kumar, MD
Principal Investigator



Richard Larson, MD, PhD
CTSC Liaison



Curtis Noonan, PhD
CP3 Core Director



Mark Burge, MD
PD Core Director



Yiliang Zhu, PhD
BERD Core Director



Tony Ward, PhD
CEO Core Director



Gwen Marchand, PhD
T&E Core Director



Larissa Myaskovsky, PhD
PD Core, Associate Director,
Mentoring Unit



Merle Kataoka-Yahiro, DrPH
PD Core, Associate Director,
Education Unit



Scott Seville, PhD
CP3 Core, Associate Director
&
Chair of Concierges Network



Ruben Dagda, PhD
PD Core, Associate Director for
"ATF" Program & GWWs



Melissa Schiff, MD, MPH
BERD Core, Associate Director

ANNUAL MEETING VENUES

MEETING HOTEL

**MGM SIGNATURE HOTEL**

145 E. Harmon Avenue
Las Vegas, NV 89109
(702) 797 - 6000

MEETING LOCATION

**UNLV STUDENT UNION – 2nd FLOOR**

4505 Maryland Parkway
Las Vegas, NV 89154
(702) 895 - 4449

WELCOME & NETWORKING
RECEPTION LOCATION**THE SMITH CENTER**

361 Symphony Park Avenue
Las Vegas, NV 89106
(702) 749 - 2012

SHUTTLE SERVICE SCHEDULE

Monday, June 10, 2019

7:15 am TO 9:15 am (Last Shuttle)	Shuttle Service begins with departures from The Signature Hotel, Tower 2 Valet and travel to UNLV Student Union <i>(Shuttles will depart hotel every 15 minutes)</i>
4:00 pm TO 5:30 pm (Last Shuttle)	Shuttle Service resumes with departures from UNLV Student Union and travel to The Signature Hotel, Tower 2 Valet <i>(Shuttles will depart the Student Union every 15 minutes)</i>
5:45 pm	Shuttle Service from The Signature Hotel, Tower 2 Valet to The Smith Center for Performing Arts begins <i>(Shuttles will depart from The Signature Hotel, Tower 2 Valet every 30 minutes: 5:45 pm, 6:15 pm and 6:45 pm)</i>
9:15 pm 9:30 pm (Last Shuttle)	Shuttle Service will depart The Smith Center and travel to The Signature Hotel, Tower 2 Valet

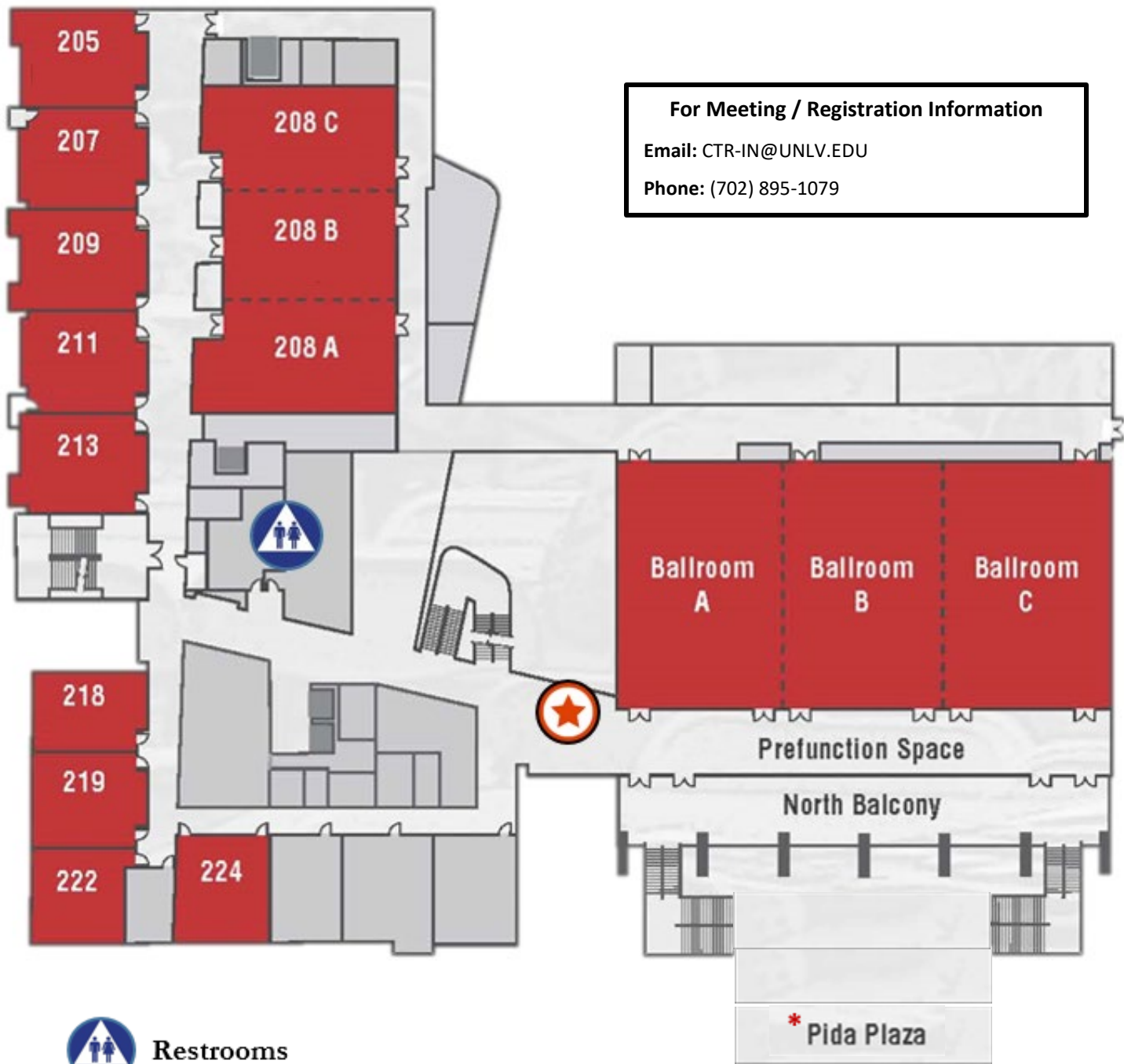
Tuesday, June 11, 2019

7:15 am TO 9:15 am (Last Shuttle)	Shuttle Service begins with departures from The Signature Hotel, Tower 2 Valet and travel to UNLV Student Union <i>(Shuttles will depart hotel every 15 minutes)</i>
4:00 pm TO 6:30 pm (Last Shuttle)	Shuttle Service resumes with departures from UNLV Student Union and travel to The Signature Hotel, Tower 2 Valet <i>(Shuttles will depart the Student Union every 15 minutes)</i>

NOTE:

- Shuttle frequency may vary for each route due to traffic & weather conditions
- Shuttle Service is complimentary

UNLV STUDENT UNION – 2nd Floor
MEETING ROOMS



DAY ONE * MONDAY * JUNE 10, 2019

TIME

7:00 am

Registration Opens

(Student Union, Outside Ballroom A)

7:00 – 8:00 am

Hot Breakfast

(Student Union, Outside Ballrooms)

8:00 – 9:45 am

The MW CTR-IN Program: Overview and Impact on Engineering Research Faculty and the Mountain West Region

(Student Union, Ballroom BC)

8:00 – 8:05 am

Welcome Remarks

Marta Meana, PhD

President, University of Nevada, Las Vegas

8:05 – 8:30 am

The MW CTR-IN Program: Overview and Plans for the Future - Years 6-10

Parvesh Kumar, MD

Principal Investigator (PI), MW CTR-IN Program

8:30 – 8:45 am

Building a Clinical Translational Research Program: An Engineer's Perspective

Bryn Martin, PhD, PE

University of Idaho

8:45 – 9:00 am

Accelerating the Growth of My Research Program & Career Development Through a MW CTR-IN Pilot Grant

Clare Fitzpatrick, PhD

Boise State University

9:00 – 9:15 am

From CTR-IN to National Science Foundation Funding: An Example from Human-Computer Interaction

Domen Novak, PhD

University of Wyoming

9:15 – 9:30 am

Real Impact: The MW CTR-IN and Idaho State University

Rex Force, PharmD, BCPS, FCCP

Vice President for Health Sciences, Professor of Family Medicine and Pharmacy Practice, Idaho State University

9:30 – 9:45 am

Update on Mountain West Research Consortium Initiatives

Scott Whittenburg, PhD

Vice President for Research and Creative Scholarship, University of Montana / Mountain West Research Consortium

9:45 – 10:00 am

Break

(Light Snacks and Refreshments will be served)

(Student Union, Outside Ballrooms)

Program Abbreviation Glossary

PI: Private Investigator

IAC: Internal Advisory Committee

EAC: External Advisory Committee

EC: Executive Committee

PD: Professional Development

CP3: Pilot Projects Program

BERD: Biostatistics, Epidemiology, Research, and Design

CEO: Community Engagement and Outreach

T&E: Tracking and Evaluation

TIME

10:00 – 10:30 am

Mountain West Clinical and Translational Research Podium Presentations

(Student Union, Ballroom BC)

Introductions

Parvesh Kumar, MD

Principal Investigator (PI), MW CTR-IN Program

10:00 – 10:10 am

MW CTR Presentation #1

Chien-An “Andy” Hu, PhD – *University of New Mexico, School of Medicine*
APOL1 CKD Risk Alleles in New Mexico African American and American
Indian Populations: Racial Disparity

10:10 – 10:20 am

MW CTR Presentation #2

Helen “Cathleen” Tarp, PhD, MPH – *Idaho State University, College of Arts and Sciences*
Changes in knowledge of HPV, cervical cancer, PAP smears, and attitudes towards HPV vaccination
from a Community-Based Intervention for Latinas

10:20 – 10:30 am

MW CTR Presentation #3

Vallabh “Raj” Shah, PhD – *University of New Mexico, Health Sciences Center*
Home base care approach to reduce disparity in diabetes care in Zuni Indians

10:30 – 11:30 am

Current Year Pilot Grant Awardees Presentations #1-5

Moderator:

Curtis Noonan, PhD

CP3 Core Director, MW CTR-IN Program

REQUIRED ATTENDANCE: EAC Members and Mentors

12 Minutes Each

[Oral Presentations = 8 minutes, and Q & A = 4 minutes]

(Student Union, Ballroom BC)

10:30 – 10:42 am

Atif Zafar, PhD – *University of New Mexico*

Healthcare disparities among Hispanics, Native Americans, and Caucasians in Ischemic Stroke Patients
Assessing the Long-Term Outcomes of Specialized Supportive Care on the Health of Infants with In-Utero
Opioid Exposure

10:42 – 10:54 am

Lorraine Benuto, PhD – *University of Nevada, Reno*

¡Yo no estoy loco/a! Using a telenovela style Education Entertainment Video to reduce stigma among Latinos in
an Integrated Healthcare Setting

10:54 – 11:06 am

Tyler Brown, PhD – *Boise State University*

Analysis of Knee Motion to Prevent and Treat the Increasing Incidence of Premature Knee OA

11:06 – 11:18 am

Nicole Young, PharmD, BCCCP – *University of Hawaii*

Secondary Stroke Prevention Among Filipinos Compared with Other Racial Groups in Hawaii

11:18 – 11:30 am

Cynthia Lancaster, PhD – *University of Nevada, Reno*

Augmenting Exposure Therapy for Social Anxiety with Transcranial Direct Current Stimulation

11:30 – 12:00 Noon

MEETING GROUP PICTURE

(Student Union, *Pida Plaza)

**Please refer to pg. 7 for event location*

TIME

12:00 Noon – 1:00 pm

**PI, IAC, EAC, & Executive Committee
Joint Session**

CLOSED MEETING

Executive Lunch

(Student Union, Ballroom A)

OPEN LUNCH

(Student Union, Outside Ballrooms)

1:00 – 2:30 pm

**Joint Session IAC & CP3 Director
(Curtis Noonan, PhD) – Review
and Approval of Year 7 Pilot Grant
Awards**

CLOSED MEETING

1:00 – 2:00 pm

(Student Union, Room 211)

MW IDeA Program PI's Collaborative Workshop

Moderators:

Scott Seville, PhD

CP3 Associate Director & Concierge Chair, MW CTR-IN Program

And

Tony Ward, PhD

CEO Core Director, MW CTR-IN Program

1:00 – 2:30 pm

**Joint Funding Opportunities and Programs
(e.g., DTTG, Common Cores) within
the MW IDeA Region**

Moderator:

Scott Seville, PhD

CP3 Associate Director & Concierge Chair, MW CTR-IN Program

1:00 – 2:15 pm

- (1) Developmental Translational Team Grants (DTTGs) - Update
- (2) Coordination and Usage of Mountain West University Cores
- (3) ASCEND Program – **Eric Prossnitz, PhD**

**PI (Parvesh Kumar, MD)
&
IAC
Joint Session**

CLOSED MEETING

2:00 – 2:30 pm

(Student Union, Room 211)

**Western Region IDeA Meeting – October 6-9th, 2019
(Las Vegas, NV)**

Moderator:

Joshua Baker, PhD

Principal Investigator (PI), NV INBRE

2:15 – 2:30 pm

(Student Union, Ballroom A)

TIME

2:30 – 3:45 pm

**PI (Parvesh Kumar, MD)
&
EAC
Members Session**

CLOSED MEETING

2:30 – 3:30 pm

(Student Union, Room 211)

**BERD Core
Group Meeting**

CLOSED MEETING

Moderator:
Yiliang Zhu, PhD
BERD Core Director, MW CTR-IN Program

1:00 – 5:00 pm

(Student Union, Room 208A)

**NIGMS Program Staff
(Closed Meetings)**

**NIGMS Program Staff and
Current Year Pilot Grant
Awardees Meeting**

Moderator:
Curtis Noonan, PhD
CP3 Core Director, MW CTR-IN Program

CLOSED MEETING

2:30 – 3:30 pm

(Student Union, Room 205)

**NIGMS Program Staff and
T&E Core Director Meeting**

CLOSED MEETING

3:30 – 4:00 pm

(Student Union, Room 205)

Break

(Light Snacks & Refreshments will be served)

3:30 – 3:45 pm

(Student Union, Outside Ballrooms)

3:45 – 5:00 pm

**EAC and CP3 Director (Curtis Noonan, PhD)
Session - Review and Approval of Year 7 Pilot Grant
Awards**

CLOSED MEETING

3:45 – 5:00 pm

(Student Union, Room 211)

CEO Core Administrative Meeting

Moderator:
Tony Ward, PhD
CEO Core Director, MW CTR-IN Program

CLOSED MEETING

3:45 – 5:00 pm

(Student Union, Room 207)

**Welcome & Networking Reception and Poster Presentations
with Formal Dinner**

6:30 – 9:30 pm

The Smith Center for the Performing Arts
361 Symphony Park Avenue, Las Vegas, NV 89106

6:30 – 7:30 pm

The Smith Center – Reynolds Hall – Grand & Mezzanine Lobby

(Poster Presentations with Appetizers - *Hors d'oeuvres*)

7:30 – 8:00 pm

The Smith Center – Reynolds Hall – Upper Lobby

Recognition Ceremony - (*Serve Salads and Soups*)

8:00 – 9:30 pm

The Smith Center – Reynolds Hall – Upper Lobby

(*Serve Dinner*)

DAY TWO * TUESDAY * JUNE 11, 2019

TIME

8:00 am

Registration Opens
(Student Union, Outside Ballroom A)

8:00 – 9:00 am

Hot Breakfast
(Student Union, Outside Ballrooms)

9:00 – 10:45 am

Opioid Crisis: The Response of the MW CTR-IN Program
(Student Union, Ballroom BC)

9:00 – 9:05

Introduction
Parvesh Kumar, MD – *Principal Investigator (PI), MW CTR-IN Program*

9:05 – 9:35 am

Robert Rhyne, MD – *University of New Mexico, School of Medicine*
HERO TRaILs: Educating Clinicians in Chronic Non-Cancer Pain Management and Opioid Prescribing

9:35 – 9:55 am

Ernesto Moralez, PhD – *New Mexico State University*
Communication Strategies to Improve Clinical Encounters for Hispanic Patients Presenting with Pain

9:55 – 10:15 am

Renee Robinson, PharmD, MPH, MSPharm – *Idaho State University*
Engaging Community in Opioid Research

10:15 – 10:45 am

Panel Discussion (Q & A)
Robert Rhyne, MD ▪ Ernesto Moralez, PhD ▪ Renee Robinson, PharmD, MPH, MSPharm

10:45 – 11:00 am

Break
(Light Snacks and Refreshments will be served)
(Student Union, Outside Ballrooms)

11:00 – 12:00 Noon

Current Year Pilot Grant Awardees Presentations #6-10
Moderator:
Curtis Noonan, PhD
CP3 Core Director, MW CTR-IN Program
REQUIRED ATTENDANCE: EAC Members and Mentors
12 Minutes Each
[Oral Presentations = 8 minutes, and Q & A = 4 minutes]
(Student Union, Ballroom BC)

11:00 – 11:12 am

Heather Ruthfuss, PhD – *University of Wyoming*
The Role of Citrullination in the Etiology of Female Rheumatoid Arthritis

11:12 – 11:24 am

Cynthia Curl, PhD – *Boise State University*
Assessment of Risk Factors for Health Disparities among Latina Farm Workers

11:24 – 11:36 am

Sophia Newcomer, PhD – *University of Montana*
Bridging the rural-urban disparity: a mixed-methods analysis of human papillomavirus vaccine uptake in Montana

11:36 – 11:48 am

Chloe Wardropper, PhD – *University of Idaho*
Perceptions of Lead Contamination and Behavioral Intentions in a Mining Region

11:48 – 12:00 Noon

Renee Robinson, PharmD, MPH, MSPharm – *University of Alaska, Anchorage*
Assessing the Long-Term Outcomes of Specialized Supportive Care on the Health of Infants with In-Utero Opioid Exposure

TIME

OPEN LUNCH

12:00 Noon – 1:00 pm

(Student Union, Outside Ballrooms)

Concierge Session

CLOSED MEETING

Moderator:

Scott Seville, PhD

CP3 Associate Director & Concierge Chair, MW CTR-IN Program

12:00 Noon – 1:00 pm

(Student Union, Room 205)

**Pilot Grant (PG) Awardees and DTTG Session:
Current PG Awardees and Prior PG Awardees with Extramural Grant Funding &
Developmental Translational Team Grant Awardees**

Moderator(s):

Professional Development Core

Mark Burge, MD

PD Core Director, MW CTR-IN Program

Larissa Myaskovsky, PhD

PD Core Associate Director, MW CTR-IN Program

Ruben Dagda, PhD

PD Core Associate Director, MW CTR-IN Program

Merle Kataoka-Yahiro, DrPH, MS, APRN

PD Core Associate Director, MW CTR-IN Program

Tracking & Evaluation Core

Gwen Marchand, PhD

T&E Core Director, MW CTR-IN Program

And

CP3 CORE

And

BERD CORE

And

CEO CORE

And

EAC MEMBERS

1:00 – 4:30 pm

(Student Union, Ballroom A, **1:00 – 3:00 pm**)

&

(Student Union, Rooms 208A / 208B, **3:15 – 4:30 pm**)

3:00 – 3:15 pm

Break

NIGMS and PI

CLOSED MEETING

4:30 – 5:30 pm

(Student Union, Room 209)

**CP3 Core and DTTG Awardees
Meeting**

CLOSED MEETING

4:30 – 5:30 pm

(Student Union, Room 205)

**Professional Development Core
Meeting**

CLOSED MEETING

4:30 – 6:00 pm

(Student Union, Room 207)

UNLV Wi-Fi Instructions – Guest Access

Campus guests can create an account to receive Internet access on the UNLV-Sponsored wireless network for three days.

Instructions

1. Connect to the **UNLV-WiFi** wireless network
2. Select **Request an Account**
3. Enter your name and a valid email address
4. Open your email and retrieve the username and password provided
5. Connect to the **UNLV-Sponsored** wireless network
6. Enter the username and password provided

Visitors can request additional time by completing the process again, up to 10 times annually.

You will be notified when your wireless access is set to expire.



NOTES



MW CTR-IN

**THANK YOU FOR ATTENDING THE
6TH ANNUAL MOUNTAIN WEST CTR-IN MEETING!**



**Idaho State
UNIVERSITY**



University of Nevada, Reno



UNIVERSITY
of HAWAII[®]
MĀNOA



BOISE STATE UNIVERSITY

