



NIH Loan Repayment Programs

NIH Loan Repayment Programs (LRPs)

Friday, September 24, 2021, 11:00-12:00 pm

An Overview: What You Should Know About the LRPs

- Francisco S. Sy, MD, DrPH, Professor & Chair,
Department of Environmental & Occupational Health
UNLV School of Public Health
Email: francisco.sy@unlv.edu

Perspectives from Current LRP Recipients at UNLV

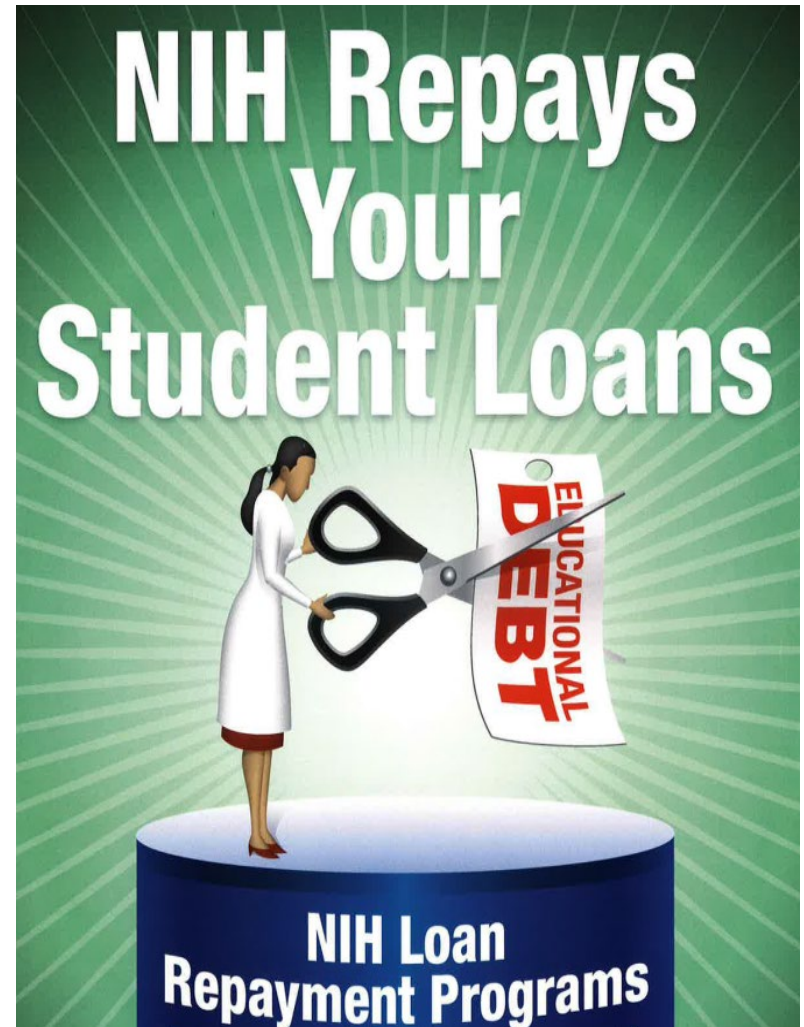
- Jason Flatt, PhD, MPH, Assistant Professor
Department of Environmental & Occupational Health
Email: Jason.flatt@unlv.edu
- Ann Vuong, DrPH, MPH, Assistant Professor
Department of Epidemiology and Biostatistics
Email: ann.vuong@unlv.edu

Summary

NIH LRPs will repay:

- Up to **\$100,000 over 2 years** in educational loan repayment
 - Depending on debt level
- Coverage of most Federal taxes resulting from the NIH LRP
- 2 year initial contracts
 - 1 or 2 year competitive renewals
- Approximately 1,400 researchers funded yearly
- **50% application success rate overall**

*****Application Deadline – Nov. 18, 2021**



Objective

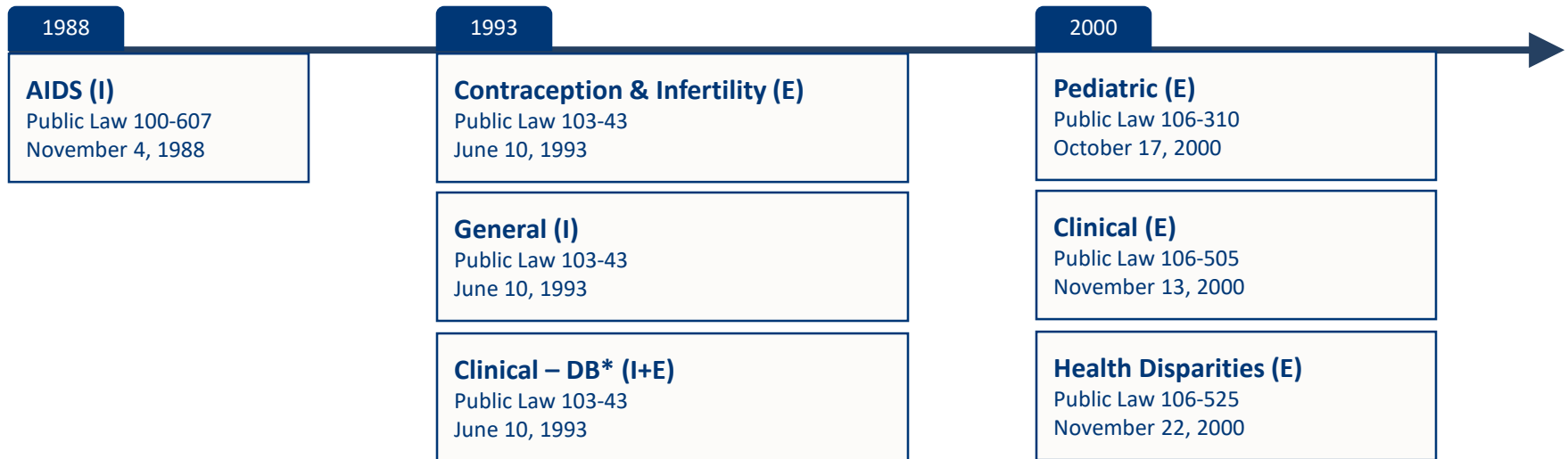
- Provide information about the benefits of the LRPs

Agenda

- **What You Should Know About the LRPs**
 - Overview of the LRPs
 - Eligibility Criteria
 - Program Statistics
 - What to keep in mind when applying
 - Resources
- **LRP Recipients' Perspectives**

The NIH LRPs Can Help!

Legislative History of the NIH Loan Repayment Programs



Note: I= Intramural LRP (research within NIH)
E=Extramural LRP (research outside NIH)

Legislative History – 21st Century Cures Act

Enacted on December 13, 2016

Raised LRP Award Maximum (FY 2020)

- Cap on LRP awards is now \$50,000/year
- Previously set at \$35,000/year

Expanded Health Disparities Research LRP (FY 2020)

- All NIH Institutes and Centers expected to participate
- Previously limited to NIMHD

Establishes Extramural REACH LRP (FY 2022)

- Designed to pursue major opportunities and gaps in biomedical research and expand critical research in emerging areas of human health

6 Extramural NIH LRPs



Clinical Research

For clinical investigators interacting with human patients in an inpatient or outpatient setting.

[Show Details](#)

Pediatric Research

For investigators conducting research directly related to diseases, disorders, and other conditions in children.

[Show Details](#)

Health Disparities Research

For investigators conducting research that focuses on one or more of the minority health disparity populations defined by NIMHD and the Agency for Healthcare Research and Quality.

[Show Details](#)

Contraception and Infertility Research

For investigators conducting research in conditions that impact on the ability of couples to either conceive or bear young.

[Show Details](#)

Clinical Research for Individuals from Disadvantaged Backgrounds

For clinical investigators coming from an environment that inhibited the individual from obtaining the knowledge, skill, and ability required to enroll in, and graduate from, a health professional school, or from a family with an annual income below low-income thresholds.

[Show Details](#)

Research in Emerging Areas Critical to Human Health (REACH)

For investigators pursuing major opportunities or gaps in emerging high-priority research areas, as defined by NIH Institutes and Centers.

[Show Details](#)

LRP Eligibility Criteria



Any research funding support or salary from a for-profit institution is not eligible for the NIH LRP



QUALIFYING LOANS

NIH WILL Repay:

- Educational loans from undergraduate degree up to first terminal degree
- Educational loans backed by the U.S. government
- Educational loans from accredited U.S. academic institutions and commercial lenders

NIH Will NOT Repay:

- Non-educational loans (e.g. home equity loans)
- PLUS loans to parents
 - ***EXCEPTION:*** *PLUS loans disbursed to graduate and professional **students on or after July 1, 2006**, qualify for LRP repayment*
- Loans from non-US governments or institutions
- Loans converted to a service obligation, delinquent or in default
- Loans consolidated with another individual (e.g. spouse or child)
- Loans of full-time Federal government employees or VA Fellows

LRP Program Benefits

Award Length

- New awards (Type 1) must be **2 years**
- Renewal awards (Type 2) may be **1 or 2 years**

Benefits

- Up to \$50,000/year in educational debt repayment
- 39% of loan repayment to cover Federal taxes
- LRP awards are **portable**

Mentored or Independent LRP Research

Mentored

- Research is partially funded by another investigator's grant(s)
- Research is conducted entirely in another investigator's assigned space
- Not allowed to submit an application as the PD/PI of an NIH research grant application
- Receiving support and protected time from a fellowship or career development award.

Independent

- Has a full-time faculty position
- Received a start-up package for support of his/her independent research
- Has research space dedicated to his/her own research
- May be the responsible supervisor for graduate students, and/or hire technical support or postdoctoral fellows
- Eligible to apply for independent research funding as the PD/PI of a Federal or non-Federal research grant.

Mentored or Independent LRP Research

Mentored

- Research is partially funded by the investigator's grant(s)
- **Mentoring/Training Plan**
Mentor's Biosketch
Additional Biosketch (optional)
- Not currently employed as the PD/PI of an NIH research grant application
- Part-time
- **Reference Letter**
Mentor Assurances

Applicant must submit

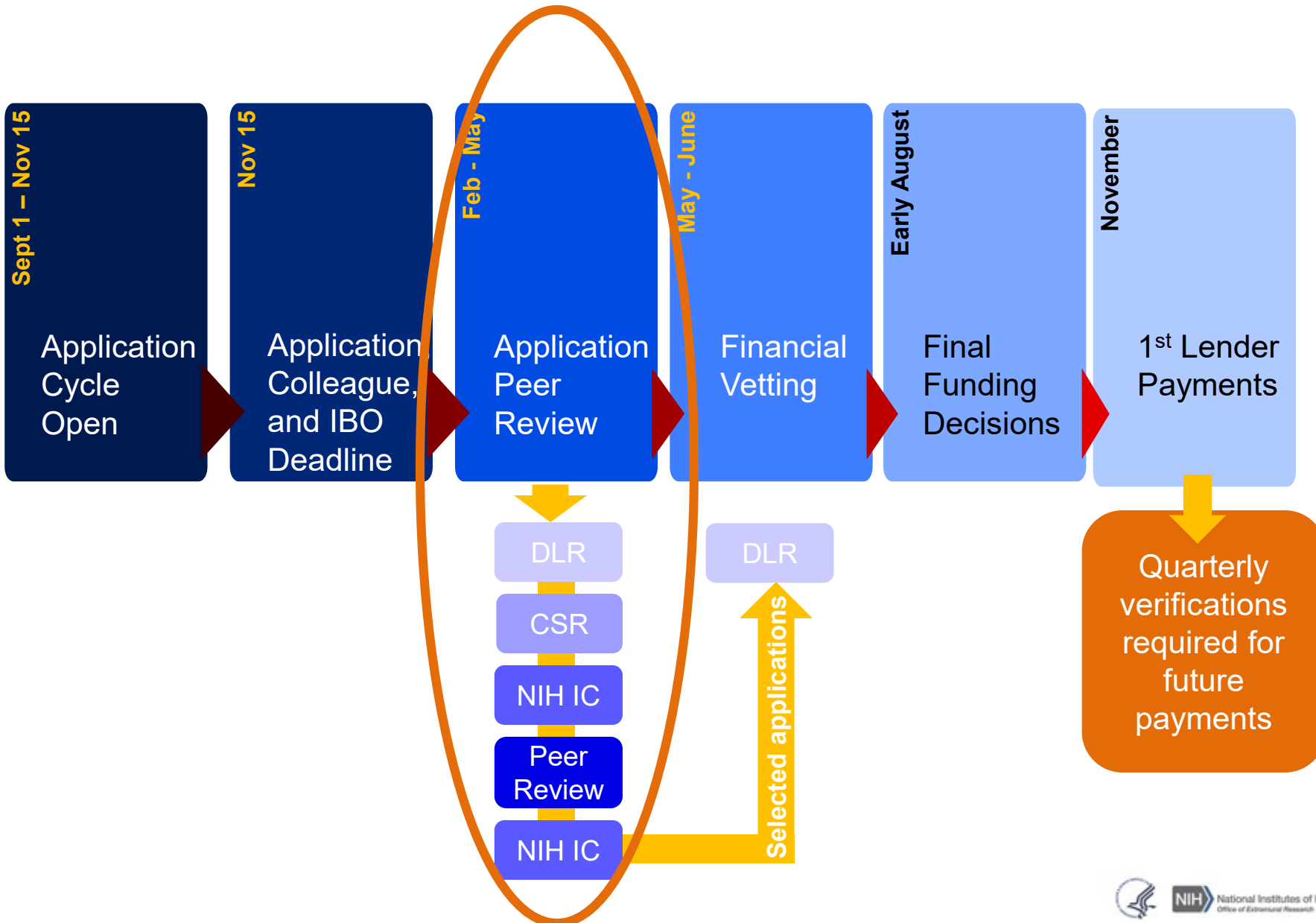
Mentor must submit

Independent

- Full-time faculty position
- Received a start-up package for research
- Has research space dedicated to his/her own research
- the responsible supervisor for
- **Not Applicable** (no mentor)
- Eligible to apply for independent research funding as the PD/PI of a Federal or non-Federal research grant.

Career Development Plan

Extramural LRP Application Cycle Timeline



Post-Submission Materials

- Accepted after submission but before the peer review if they result from unforeseen administrative issues or events
- Acceptable materials include:
 - Change of institution (e.g., applicant moved to another university)
 - Updates related to changes in senior/key personnel pivotal to the LRP project (e.g., biosketch for new mentor)
 - Adjustments resulting from unforeseen events (e.g., natural disasters)
 - Citations of newly accepted manuscripts for publication
 - Newly awarded funding or decisions on pending proposals

Must be received by the Division of Loan Repayment by email by January 31

Who Is Benefitting From the LRPs?

NIH LRP Dashboard

Overview

Demographics

Programs Overview



All LRPs



All Awards



FY 2011-2020



Number of
Applications

27,027

Number of
Awards

13,617

Success Rate

50%

Mean
Award

\$52,524

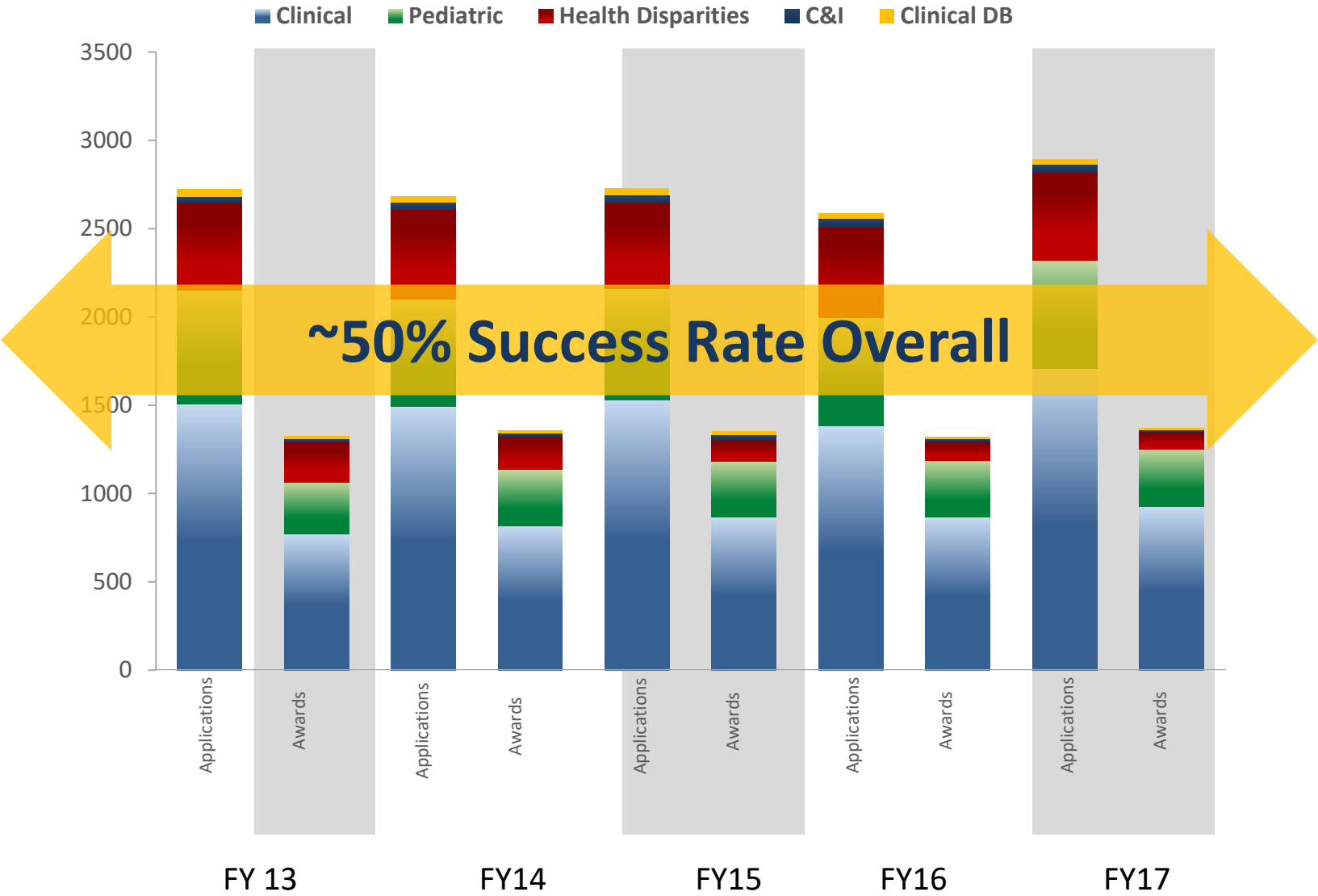
Mean Age
of Awardees

37 Years

Total
Funding

\$715,224,615

NIH LRP Applications & Awards, FY13-20



Overview

Demographics

All LRPs

All Awards

Fiscal Year

Fiscal Year

Awardee Distribution by State

All LRPs

All Awards

FY 2020

Number

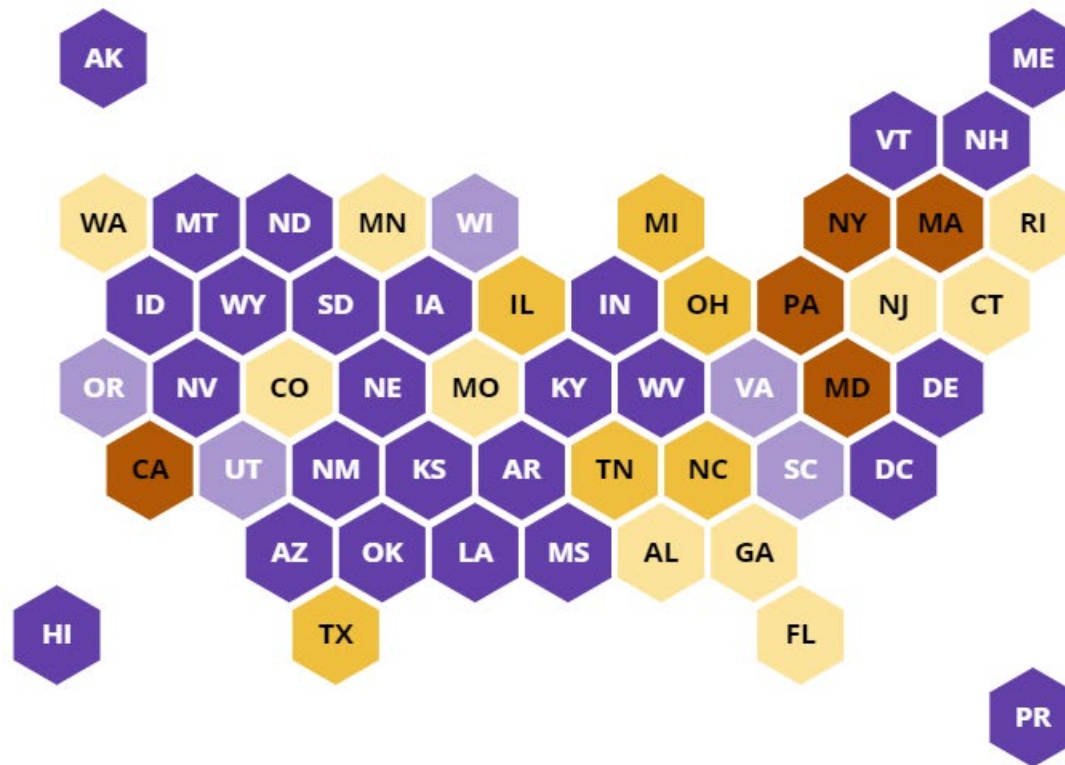
> 60

41-60

21-40

12-20

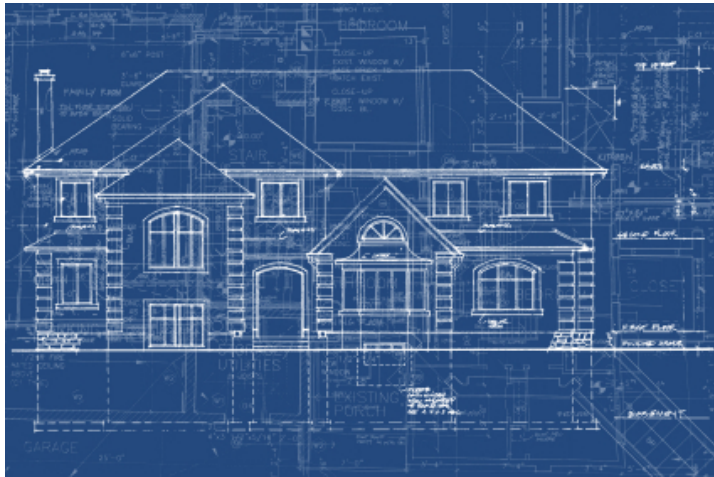
0-11



What to Keep In Mind While **'Building'** Your Application

QUESTION....

- If you were going to build a house, what would you need?



A Blueprint...BUT...you also need contractor help!

You're building a RESEARCH CAREER....

- What's your blueprint? **Your LRP Application**
- Who are your helpers? **Mentors, etc**

The Application – Major Sections

- **Biosketch, Personal Information and Employment**
- **Research Activities ('*meat and potatoes*')**
 - **Personal Statement** – Describe yourself and your research goals; include previous research training experience, background/how you developed your scientific interests/accomplishments; short and long-term career goals
 - **Training/Career Development Plan** – What skills do you need to acquire to become an independent researcher (e.g., training and professional development opportunities; grantsmanship workshops, conference attendance, etc) – ***include timelines***
 - **Proposed Research Plans** – describe planned research activities, specific roles/responsibilities over next 2 years – ***include timelines***
- **Research Environment** – Why are you where you are? Who or what is important there?
- **Loan Information (*new applicants only*)**
 - Lender and servicer information, loan number, total loan amounts, loan status (e.g., in repayment/forbearance)

What Are Reviewers Looking For?

Reviewers evaluate an applicant's **potential to succeed** in an **independent** research career by rating:

- Applicant's previous **training and research experience**
- Applicant's **commitment to a research** career
- **Strength and quality** of letters of recommendation
- **Quality and appropriateness** of the research environment
- Research progress (*for Renewal applications only*)

LRP Review Criteria

1) Applicant's potential to pursue a career in research

- Applicant's previous training and experience
- Proposed research activities during LRP contract period
- Commitment to a research career
- Strength of reference letters

2) Quality of the overall environment to prepare the applicant for a research career

- Quality and availability of scientific mentors and colleagues
- Quality and appropriateness of institutional resources and facilities

3. Commitment to a clinical research career, as reflected by the personal statement of long-term career goals and plan to achieve those goals



What Should You Do Before You Start Your Application?

1. Read the **published LRP notices** (see www.lrp.nih.gov)
2. **Review the mission and priorities** for the NIH Institutes and Centers that you are interested in reviewing your application **and reach out to the appropriate NIH Program Officer/LRP Liaison** to discuss their IC's priorities!
3. **Talk to your mentors and recommenders**
4. Make sure you **have an eRA Commons ID**
5. **Contact your lender** to get information on your loan amounts

RESOURCES

LRP Website

lrp.nih.gov

The screenshot shows the homepage of the NIH Loan Repayment Programs (LRP) website. At the top, the navigation bar includes links to the U.S. Department of Health & Human Services, National Institutes of Health, and a search bar. Below this, the NIH logo and 'Division of Loan Repayment' are displayed, followed by links for 'Eligibility & Programs', 'Data & Reports', 'Contact & Engage', and 'About DLR'. A large banner image features three scientists, with a purple overlay stating 'The LRP Application Cycle is open! Click here to start your application'. Below the banner are three main action buttons: 'APPLY' (pink), 'AWARD' (teal), and 'RENEW' (blue). A row of five program categories follows: 'Research Supervisors/Mentors', 'Referees/Recommendors', 'Institutional Business Officials', 'For NIH Employees' (highlighted with a red box), and 'LRP Ambassador Program' (highlighted with a red box). At the bottom, the text 'Supporting Scientific Discovery' is on the left, and an 'Application Deadline Countdown' is on the right, showing a timer at 02:01:16:02:14 (2 weeks, 1 day, 16 hours, 2 minutes, and 14 seconds left).

U.S. Department of Health & Human Services | National Institutes of Health | [FAQs](#) | [A-Z Index](#)

NIH National Institutes of Health
Division of Loan Repayment

[Eligibility & Programs](#) | [Data & Reports](#) | [Contact & Engage](#) | [About DLR](#)

The LRP Application Cycle is open!
Click here to start your application

APPLY | **AWARD** | **RENEW**

[Research Supervisors/Mentors](#) | [Referees/Recommendors](#) | [Institutional Business Officials](#) | [For NIH Employees](#) | [LRP Ambassador Program](#)

Supporting Scientific Discovery

The NIH Loan Repayment Programs (LRPs) are a set of programs established by Congress and designed to

Application Deadline Countdown
02:01:16:02:14
2 weeks, 1 day, 16 hours, 2 minutes and 13 seconds left

LRP Website

U.S. Department of Health & Human Services National Institutes of Health

FAQs A-Z Index

Eligibility & Programs Data & Reports Contact & Engage About LRP

Other Features include:

- Application Instruction Guide
- LRP Technical Assistance Webinar
- Repayment Calculator
- Application Process Interactive Roadmap

<https://www.nimhd.nih.gov/programs/extramural/loan-repayment.html>

Available on LRP website throughout the year

APPLY RENEW

Research Supervisors/ Mentors Referees/ Recommenders Institutional Business Officials For NIH Employees LRP Ambassador Program

Supporting Scientific Discovery

Application Deadline Countdown

02:01:16:02:14

2 weeks, 1 day, 16 hours, 2 minutes and 13 seconds left

The NIH Loan Repayment Programs (LRPs) are a set of programs established by Congress and designed to

LRP Dashboard



LRP Ambassador Program

LRP Ambassador Program

What is the LRP Ambassador Program?

The LRP Ambassador Program is a network of former and current LRP awardees that promote the NIH LRPs within their local extramural scientific community.

[LRP Ambassador Overview](#)

What does an LRP Ambassador do?

LRP Ambassadors serve as a personalized link/connection between the Division of Loan Repayment (DLR) and potential applicants at their home institutions by identifying potential eligible applicants to the LRPs within their institutions and sharing information about the LRPs with them.

Since the Ambassador Program is being updated, all ambassadors must provide their current information to gain access to the Ambassador Resources on this page that are password-protected. Click on the "Become an LRP Ambassador" button to connect to the sign-up form. Login information will be emailed to you following sign-up.

[Become an LRP Ambassador](#) [Current Ambassador Login](#)



**LRP
AMBASSADOR**

LEARN ABOUT THE
AMBASSADOR NETWORK

www.lrp.nih.gov

[Contact Us](#)

[Find us on Facebook](#)

Find an LRP Ambassador

If you are an LRP applicant, you can view the Ambassador Directory to find an Ambassador at an institution near you.

If you are an Ambassador, you can use the Ambassador Directory to find other Ambassadors at an institution near you.

[View the LRP Ambassador Directory](#)





LRP Ambassador Resources

LRP Ambassadors can access resources here to better understand their role and to effectively conduct outreach to potential applicants. Resources includes a toolkit that provides an overview of the LRP Ambassador Program and a wide array of tools: a presentation about the LRPs; and information about how to order print materials. This section of the page is password-protected for Ambassadors only.

[View Resources](#)

<https://www.lrp.nih.gov/ambassador-program>

Contact:



www.lrp.nih.gov



(866) 849-4047



lrp@nih.gov



NIHLRP



@NIH_LRP

Acknowledgement: Ericka Boone, PhD
Thank you!